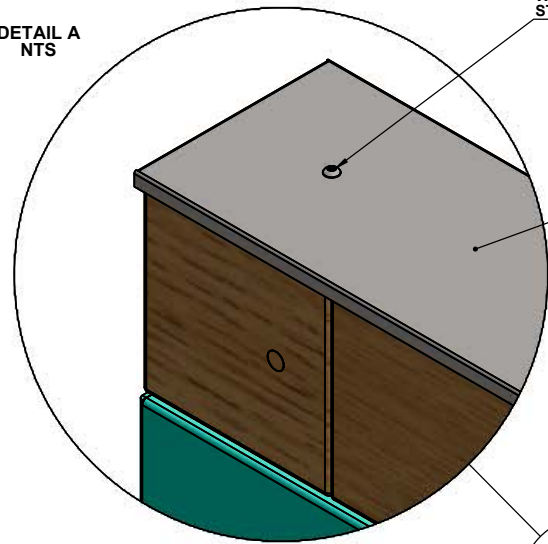


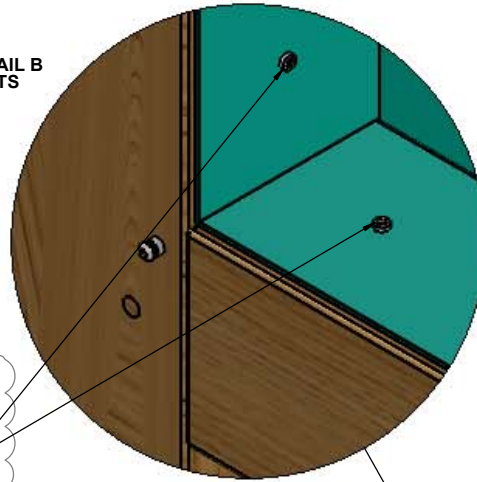
DETAIL A
NTS



COARSE THREAD BUTTON HEAD
WOOD SCREW FIXINGS TO SECURE
STAINLESS STEEL TOP CAP

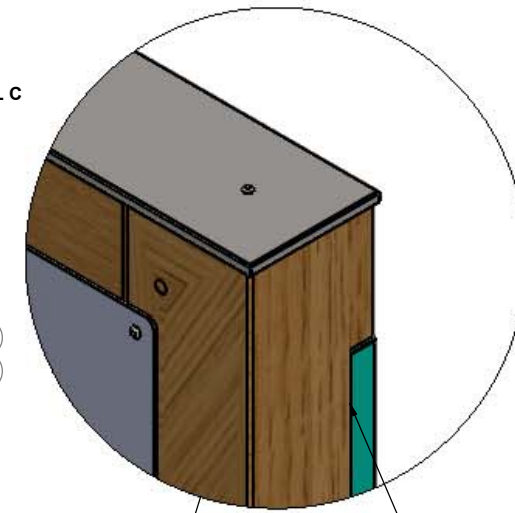
1.5mm THK ST-STEEL TOP CAP

DETAIL B
NTS



COLOUR MATCHED BUTTON HEAD
STAINLESS STEEL WOOD SCREW FIXINGS
THROUGH PANEL RETURNS INTO TIMBER
STRUCTURE TO SECURE
(BACK PANEL REMOVED FOR CLARITY)

DETAIL C
NTS



REAR CLOSING PANEL

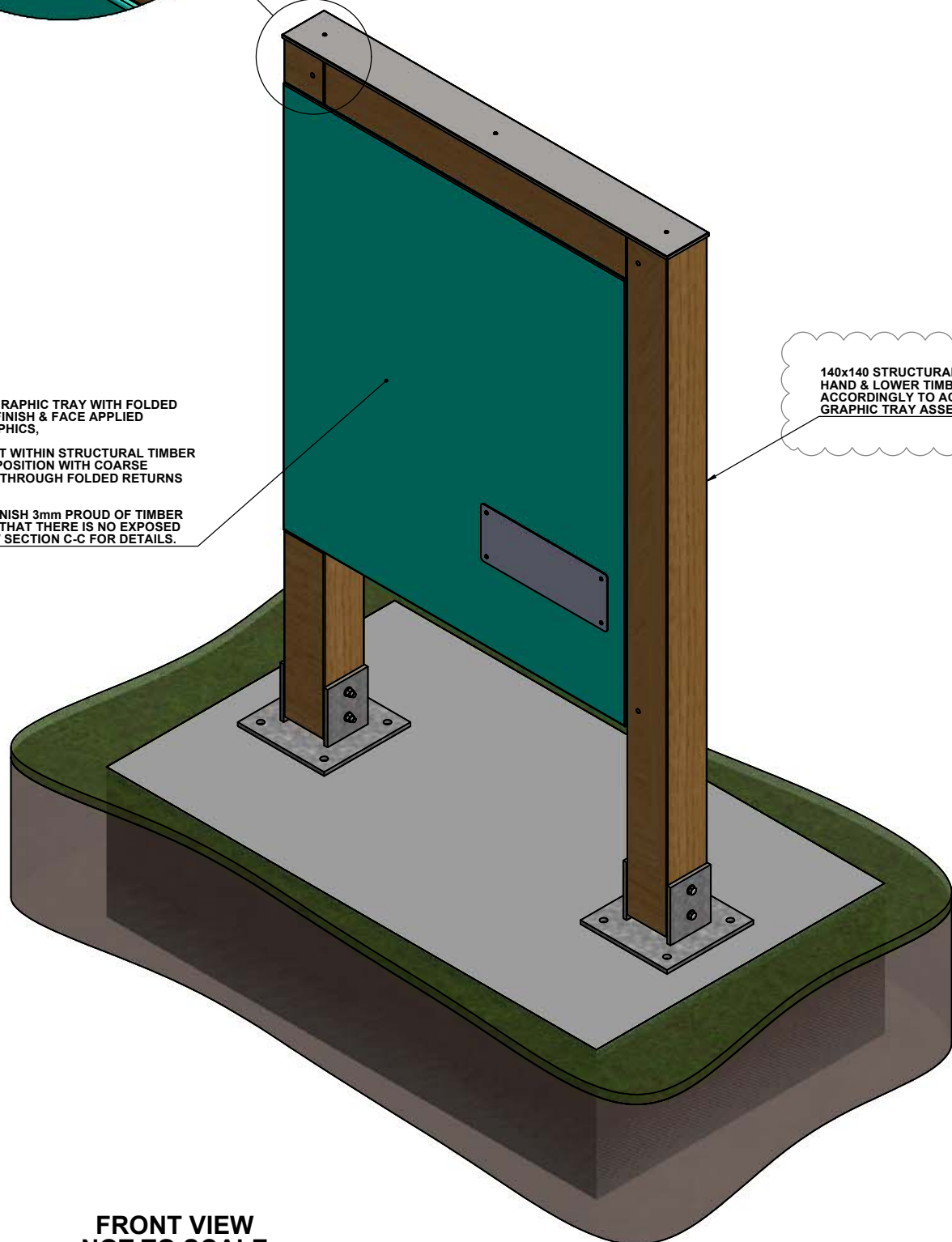
R/HAND RETURN TO
FINISH FLUSH WITH
TIMBER POST

3mm THICK ALUMINIUM GRAPHIC TRAY WITH FOLDED
RETURNS TO HAVE PPC FINISH & FACE APPLIED
DIGITALLY PRINTED GRAPHICS,

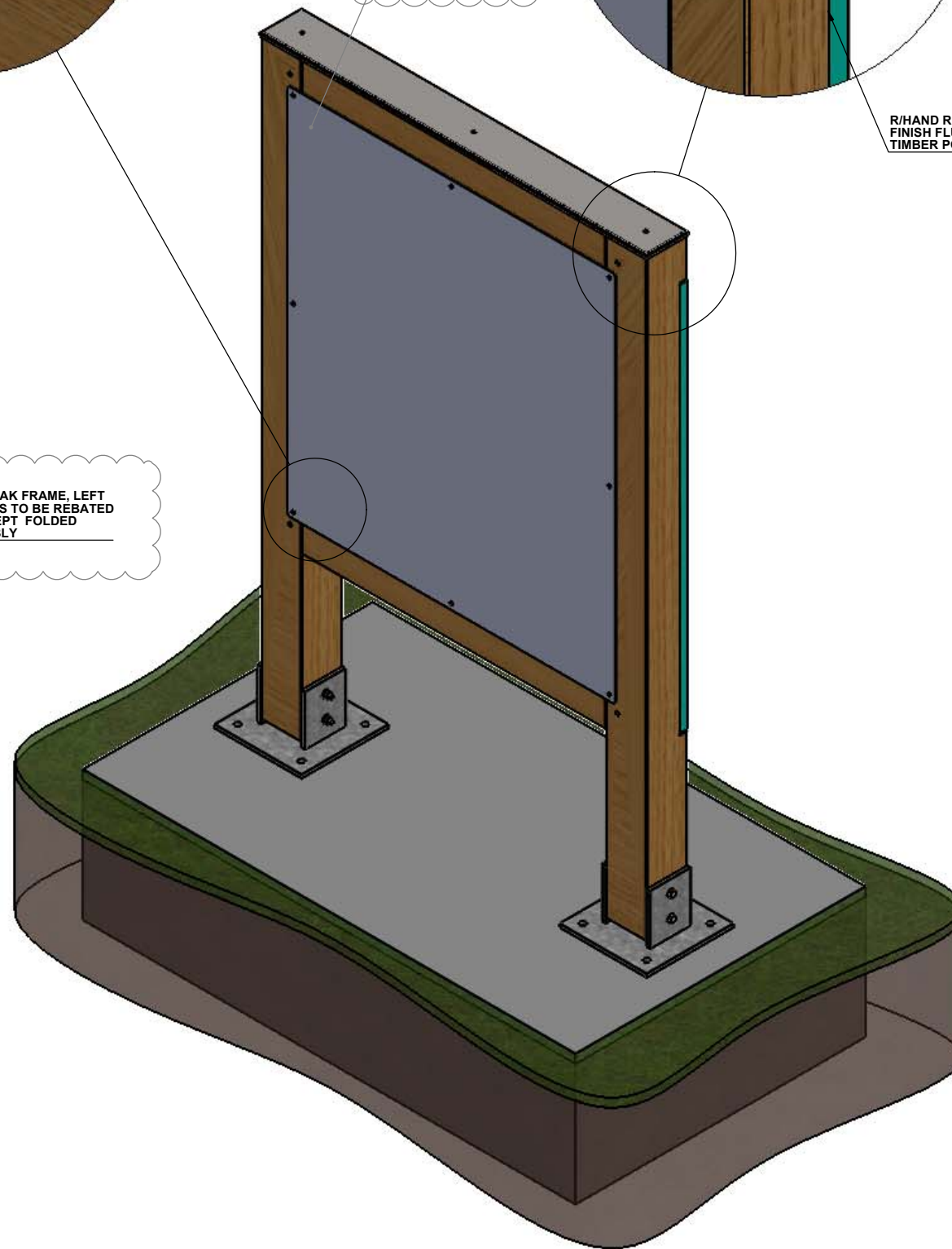
GRAPHIC TRAY TO BE SET WITHIN STRUCTURAL TIMBER
FRAME, SECURED INTO POSITION WITH COARSE
THREAD WOOD SCREWS THROUGH FOLDED RETURNS
INTO TIMBER FRAME

NOTE, FACE PANEL TO FINISH 3mm PROUD OF TIMBER
STRUCTURE TO ENSURE THAT THERE IS NO EXPOSED
END GRAIN, SEE PAGE 2 / SECTION C-C FOR DETAILS.

140x140 STRUCTURAL OAK FRAME, LEFT
HAND & LOWER TIMBERS TO BE REBATED
ACCORDINGLY TO ACCEPT FOLDED
GRAPHIC TRAY ASSEMBLY



FRONT VIEW
NOT TO SCALE



REAR VIEW
NOT TO SCALE

Rev	Date	Description	By
G	26/10/23	BACK CLOSING PANEL ADDED	JAS
F	11/7/23	REMOVABLE PANEL ADDED	MJS
E	05/4/23	TOP CAP SIZE REDUCED	MJS
D	31/3/23	VARIOUS AMENDS	MJS
C	23-3-23	GROOVES RE INTRODUCED	JAS
B	12/12/22	REVISED AS PER DISCUSSIONS WITH W.L.WEST	MJS
A	05/12/22	ORIGINAL ISSUE	MJS

Client

NATIONAL PARKS - IRELAND

Detail

WELCOME TOTEM -
FRONT & REAR VIEWS

TYPE A1

Site

N/A

Material

Material <not specified>

Component weight

103.00 kg

Drawn by	Checked by	Scale
MJS		NOT TO SCALE
Drawn date	Checked date	Approved for Manufacture
05/12/22		X

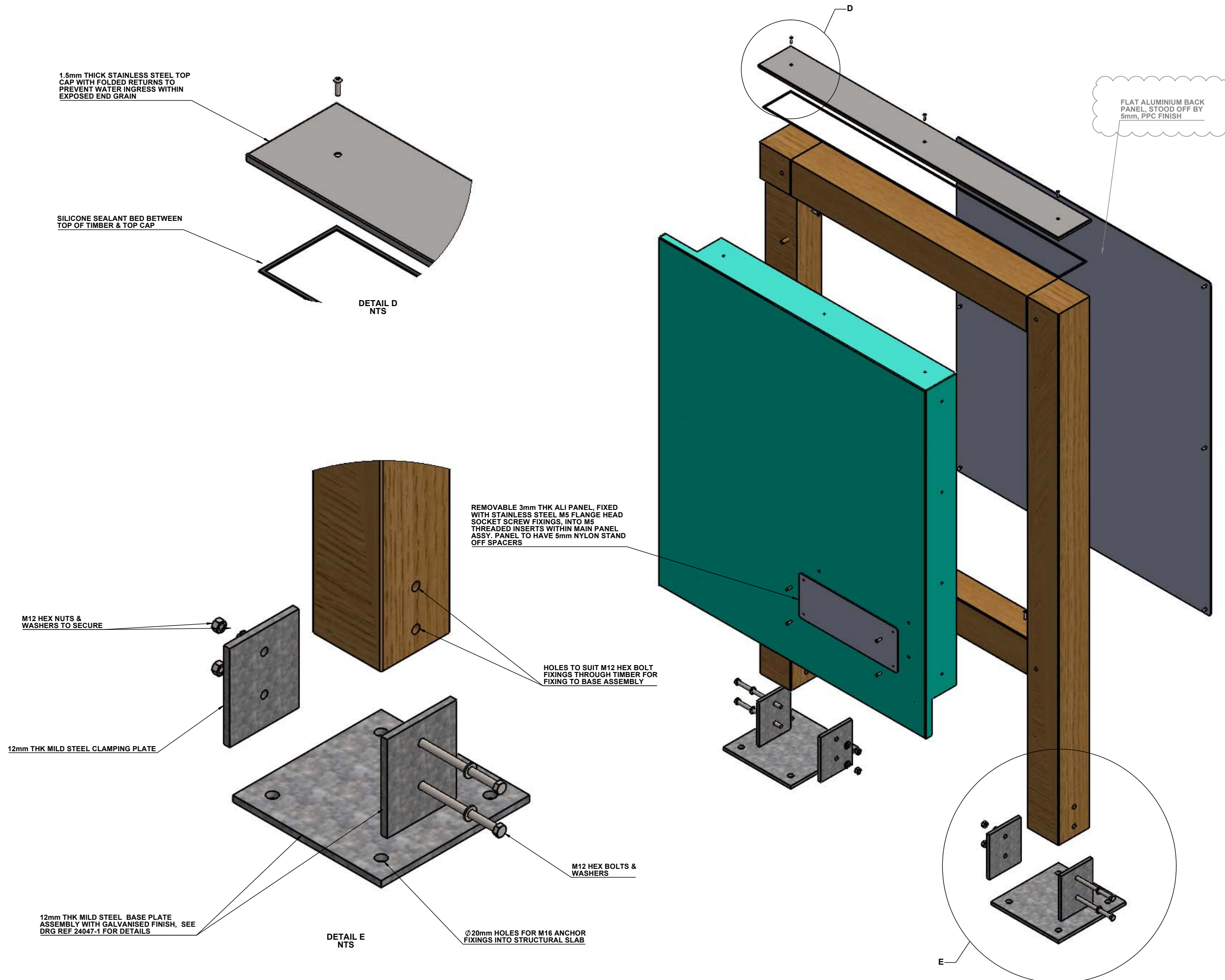


Wood & Wood International Signs Ltd
Heron Road
Sowton Industrial Estate
Exeter
Devon
EX2 7LX
01392 444501
www.wsigns.co.uk

No part of this drawing & the design contained herein may be reproduced without the written consent of Wood & Wood Signs

Drawing number	Rev
24033	G

Sheet1 of 3



Rev	Date	Description	By
G	26/10/23	BACK CLOSING PANEL ADDED	JAS
F	11/7/23	REMOVABLE PANEL ADDED	MJS
E	05/4/23	TOP CAP SIZE REDUCED	MJS
D	31/3/23	VARIOUS AMENDS	MJS
C	23-3-23	GROOVES RE INTRODUCED	JAS
B	12/12/22	REVISED AS PER DISCUSSIONS WITH W.L.WEST	MJS
A	05/12/22	ORIGINAL ISSUE	MJS

Client

NATIONAL PARKS - IRELAND

Detail

WELCOME TOTEM

TYPE A1

Site

N/A

Material

Material <not specified>

Component weight

103.00 kg

Drawn by

MJS

Checked by

NOT TO SCALE

Scale

NOT TO SCALE

Drawn date

05/12/22

Checked date

Approved for Manufacture

Approved for Manufacture

X



Wood & Wood International Signs Ltd
Heron Road
Sowton Industrial Estate
Exeter
Devon
EX2 7LX
01392 444501
www.wsigns.co.uk

No part of this drawing & the design contained herein may be reproduced without the written consent of Wood & Wood Signs

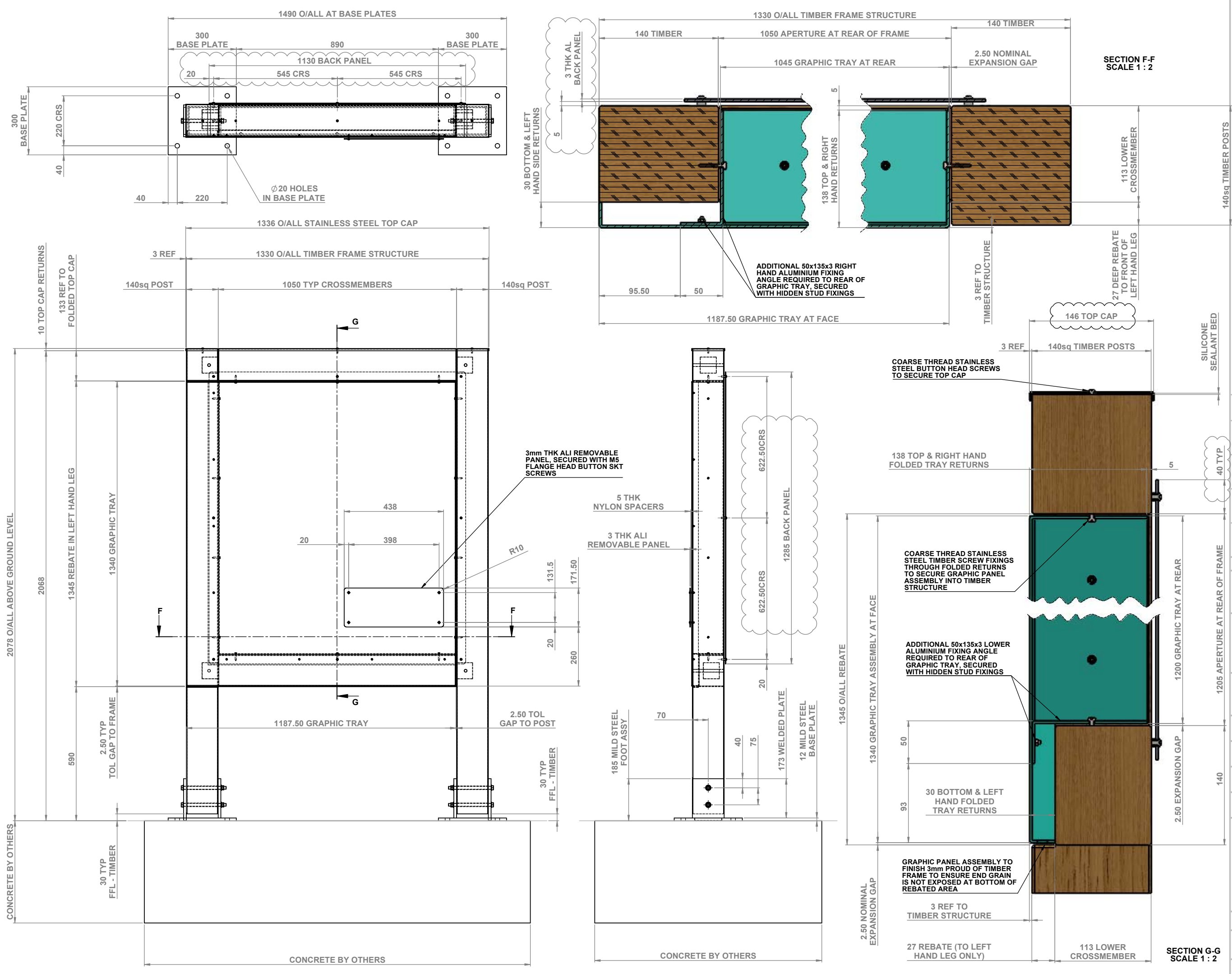
Drawing number

24033

Rev

G

Sheet 2 of 3



SECTION F-F
SCALE 1 : 2

SECTION G-G
SCALE 1 : 2

Rev	Date	Description	By
G	26/10/23	BACK CLOSING PANEL ADDED	JAS
F	11/7/23	REMOVABLE PANEL ADDED	MJS
E	05/4/23	TOP CAP SIZE REDUCED	MJS
D	31/3/23	VARIOUS AMENDS	MJS
C	23-3-23	GROOVES RE INTRODUCED	JAS
B	12/12/22	REVISED AS PER DISCUSSIONS WITH W.L.WEST	MJS
A	05/12/22	ORIGINAL ISSUE	MJS

Client
NATIONAL PARKS - IRELAND

Detail
WELCOME TOTEM - GENERAL ASSY DETAILS
TYPE A1

Site
N/A

Material
Material <not specified>
Component weight
103.00 kg

Drawn by MJS	Checked by	Scale 1:7.5
Drawn date 05/12/22	Checked date	Approved for Manufacture X

WW
Wood & Wood International Signs Ltd
Heron Road
Sawton Industrial Estate
Exeter
Devon
EX2 7LX
01392 444501
www.wsigns.co.uk

No part of this drawing & the design contained herein may be reproduced without the written consent of Wood & Wood Signs

Drawing number 24033	Rev G
Sheet3 of 3	